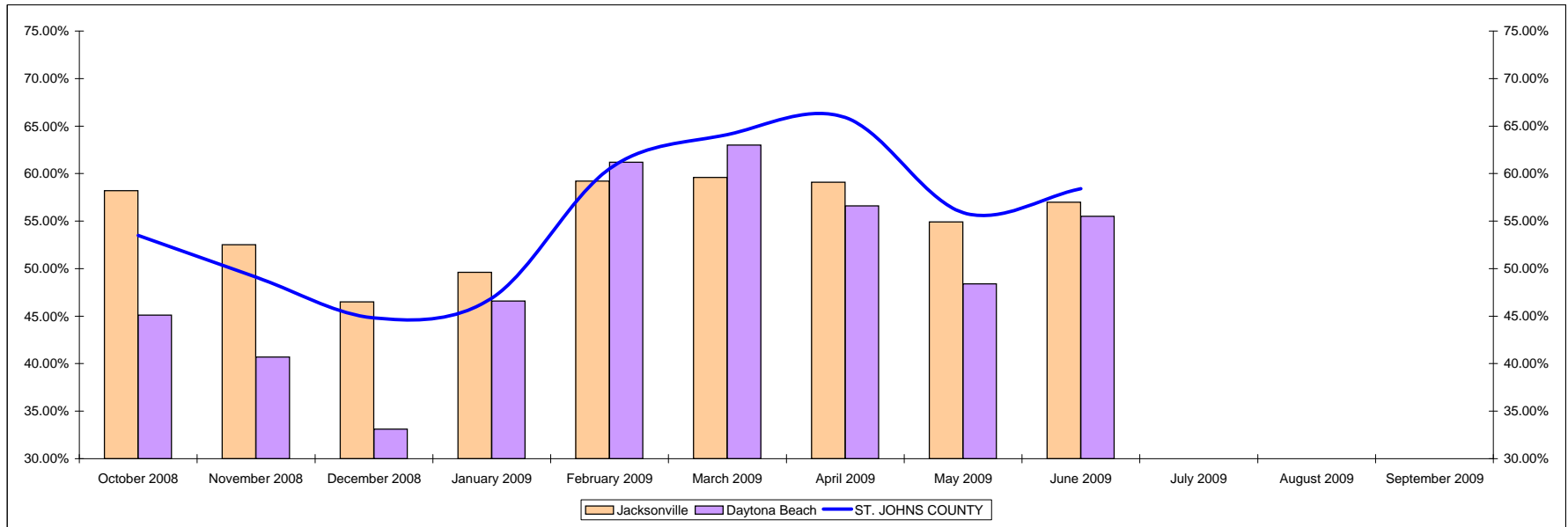


Occupancy Data - Comparison

<i>North East Coast</i>	October 2008	November 2008	December 2008	January 2009	February 2009	March 2009	April 2009	May 2009	June 2009	July 2009	August 2009	September 2009
Jacksonville	58.20%	52.50%	46.50%	49.60%	59.20%	59.60%	59.10%	54.90%	57.00%			
Daytona Beach	45.10%	40.70%	33.10%	46.60%	61.20%	63.00%	56.60%	48.40%	55.50%			
ST. JOHNS COUNTY	53.50%	49.10%	44.80%	46.90%	60.50%	64.10%	65.90%	55.90%	58.40%			
<i>South Florida</i>	October 2008	November 2008	December 2008	January 2009	February 2009	March 2009	April 2009	May 2009	June 2009	July 2009	August 2009	September 2009
Fort Lauderdale	61.50%	65.70%	64.00%	70.50%	78.50%	70.60%	64.50%	59.20%	57.40%			
Miami	66.00%	69.50%	65.70%	68.30%	73.30%	74.20%	69.10%	63.60%	58.80%			
ST. JOHNS COUNTY	53.50%	49.10%	44.80%	46.90%	60.50%	64.10%	65.90%	55.90%	58.40%			
<i>Central Florida</i>	October 2008	November 2008	December 2008	January 2009	February 2009	March 2009	April 2009	May 2009	June 2009	July 2009	August 2009	September 2009
Orlando	61.90%	53.00%	61.30%	60.60%	65.90%	67.20%	69.90%	58.40%	64.80%			
ST. JOHNS COUNTY	53.50%	49.10%	44.80%	46.90%	60.50%	64.10%	65.90%	55.90%	58.40%			
<i>West Coast</i>	October 2008	November 2008	December 2008	January 2009	February 2009	March 2009	April 2009	May 2009	June 2009	July 2009	August 2009	September 2009
Hillsborough County	55.20%	50.80%	48.50%	57.50%	66.20%	62.00%	56.30%	45.40%	50.00%			
Sarasota-Bradenton	51.60%	50.80%	45.30%	52.70%	69.10%	71.50%	61.10%	53.50%	50.00%			
ST. JOHNS COUNTY	53.50%	49.10%	44.80%	46.90%	60.50%	64.10%	65.90%	55.90%	58.40%			
<i>Other</i>	October 2008	November 2008	December 2008	January 2009	February 2009	March 2009	April 2009	May 2009	June 2009	July 2009	August 2009	September 2009
Leon County, Florida	49.10%	50.50%	41.10%	43.70%	56.20%	61.80%	56.00%	53.20%	56.50%			
Austin, Texas	70.40%	62.90%	47.30%	53.40%	64.80%	70.00%	66.50%	59.70%	67.20%			
Savannah, Georgia	63.70%	51.60%	44.30%	49.40%	54.90%	63.00%	67.90%	62.10%	66.10%			
Charleston, South Carolina	64.70%	55.00%	46.90%	47.70%	58.20%	63.30%	71.90%	66.70%	69.80%			
ST. JOHNS COUNTY	53.50%	49.10%	44.80%	46.60%	60.50%	64.10%	65.90%	55.90%	58.40%			



Average Daily Rate - Comparison

<i>North East Coast</i>	October 2008	November 2008	December 2008	January 2009	February 2009	March 2009	April 2009	May 2009	June 2009	July 2009	August 2009	September 2009
Jacksonville	\$93.01	\$89.18	\$81.60	\$84.40	\$87.69	\$89.99	\$89.16	\$92.20	\$87.62			
Daytona Beach	\$89.38	\$84.02	\$71.42	\$86.02	\$143.29	\$110.01	\$92.27	\$87.17	\$88.63			
ST. JOHNS COUNTY	\$106.75	\$102.88	\$94.02	\$96.99	\$105.51	\$106.04	\$102.86	\$118.40	\$102.65			
<i>South Florida</i>	October 2008	November 2008	December 2008	January 2009	February 2009	March 2009	April 2009	May 2009	June 2009	July 2009	August 2009	September 2009
Fort Lauderdale	\$114.30	\$111.71	\$114.80	\$136.88	\$144.79	\$129.46	\$121.75	\$104.70	\$94.66			
Miami	\$137.38	\$141.87	\$169.98	\$177.50	\$179.85	\$170.93	\$155.11	\$134.73	\$113.94			
ST. JOHNS COUNTY	\$106.75	\$102.88	\$94.02	\$96.99	\$105.51	\$106.04	\$102.86	\$118.40	\$102.65			
<i>Central Florida</i>	October 2008	November 2008	December 2008	January 2009	February 2009	March 2009	April 2009	May 2009	June 2009	July 2009	August 2009	September 2009
Orlando	\$107.31	\$97.58	\$97.27	\$108.08	\$106.74	\$106.15	\$99.52	\$98.83	\$89.53			
ST. JOHNS COUNTY	\$106.75	\$102.88	\$94.02	\$96.99	\$105.51	\$106.04	\$102.86	\$118.40	\$102.65			
<i>West Coast</i>	October 2008	November 2008	December 2008	January 2009	February 2009	March 2009	April 2009	May 2009	June 2009	July 2009	August 2009	September 2009
Hillsborough County	\$101.77	\$96.03	\$91.84	\$132.87	\$120.71	\$106.38	\$95.91	\$86.07	\$84.78			
Sarasota-Bradenton	\$100.46	\$100.25	\$106.41	\$118.98	\$132.52	\$137.39	\$126.95	\$102.92	\$96.40			
ST. JOHNS COUNTY	\$106.75	\$102.88	\$94.02	\$96.99	\$105.51	\$106.04	\$102.86	\$118.40	\$102.65			
<i>Other</i>	October 2008	November 2008	December 2008	January 2009	February 2009	March 2009	April 2009	May 2009	June 2009	July 2009	August 2009	September 2009
Leon County, Florida	\$88.27	\$93.17	\$72.96	\$74.32	\$75.05	\$83.59	\$78.98	\$80.69	\$71.63			
Austin, Texas	\$115.80	\$109.50	\$96.07	\$104.07	\$108.64	\$114.09	\$105.40	\$101.28	\$100.38			
Savannah, Georgia	\$96.25	\$86.55	\$76.30	\$79.22	\$84.81	\$92.83	\$93.18	\$89.93	\$85.75			
Charleston, South Carolina	\$116.92	\$103.57	\$91.88	\$89.61	\$96.93	\$106.86	\$117.01	\$123.46	\$108.54			
ST. JOHNS COUNTY	\$106.75	\$102.88	\$94.02	\$96.99	\$105.51	\$106.04	\$102.86	\$118.40	\$102.65			

